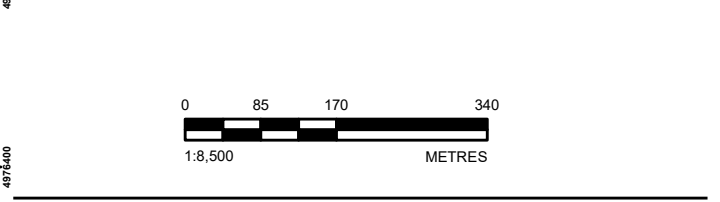


- LEGEND**
- TEST PIT/MONITORING WELL
 - TEST PIT LOCATION
 - MECP WWIS WATER WELL LOCATION
 - ASSUMED WATER WELL
 - LICENSED BOUNDARY
 - LIMIT OF EXTRACTION
 - 500 METRE BUFFER
 - ESTIMATED AVERAGE RADIUS OF INFLUENCE BASED ON ONE METRE OF WATER LEVEL CHANGE (INCREASE OR DECREASE) RELATED TO PIT DEVELOPMENT
 - ROADWAY
 - WATERCOURSE
 - WATERBODY
- WETLAND SIGNIFICANCE**
- UNEVALUATED PROVINCIAL WETLAND

NOTE(S)
 1. ALL LOCATIONS ARE APPROXIMATE

REFERENCE(S)
 1. LAND INFORMATION ONTARIO (LIO) DATA PRODUCED BY GOLDR ASSOCIATES LTD. UNDER LICENCE FROM ONTARIO MINISTRY OF NATURAL RESOURCES, © QUEENS PRINTER 2020
 2. SERVICE LAYER CREDITS: SOURCES: ESRI, HERE, GARMIN, USGS, INTERMAP, INCREMENT P, NRCAN, ESRI JAPAN, METI, ESRI CHINA (HONG KONG), ESRI KOREA, ESRI (THAILAND), NGCC, (C) OPENSTREETMAP CONTRIBUTORS, AND THE GIS USER COMMUNITY
 SOURCE: ESRI, MAXAR, EARTHSTAR GEOGRAPHICS, AND THE GIS USER COMMUNITY
 3. PROJECTION: TRANSVERSE MERCATOR, DATUM: NAD 83
 COORDINATE SYSTEM: UTM ZONE 18, VERTICAL DATUM: CGVD28



CLIENT
 THOMAS CAVANAGH CONSTRUCTION LIMITED

PROJECT
 HIGHLAND LINE PIT PROPERTY, PART OF LOTS 4 & 5,
 CONCESSION 10, DALHOUSIE TOWNSHIP, LANARK COUNTY,
 ONTARIO

TITLE
WATER SUPPLY WELLS

CONSULTANT	YYYY-MM-DD	2022-12-06
	DESIGNED	BH
	PREPARED	BR/MG
	REVIEWED	BH
	APPROVED	KAM

PROJECT NO. 19126620 CONTROL 0018 REV. 0 FIGURE 2

Path: S:\Clients\Thomas_Cavanagh_Construction\Durham_FR09_PROJ\19126620_Cavanagh_ABA\0018_Monitoring\19126620_0018_CH_0002.mxd

IF THIS MEASUREMENT DOES NOT MATCH WHAT IS SHOWN, THE SHEET SIZE HAS BEEN MODIFIED FROM: 26mm